

Peter Kwasny GmbH, Heilbronner Str. 96  
74831 Gundelsheim / Deutschland  
Telefon: +496269 95-0, Fax: +496269 95-80  
www.spraymax.com / www.kwasny.com / info@kwasny.de

**SprayMax®**  
**Top coat in the original colour**  
**2-layer system**  
**400 ml**



## Product

### Description / Purpose

Used for perfect, colour-matching paint repairs. Original OEM colours, precisely matching the colour codes from the corresponding car manufacturers. Prepare surface and apply Basecoat. Afterwards apply a layer of SprayMax 1K or even better, 2K Clearcoat.

### Properties

- 1 Component Basecoat
- 2-Layer system (Basecoat & Clearcoat)
- Excellent colour authenticity
- Excellent surface appearance
- High coverage
- Secure application

### Material base

Acrylic resins

### VOC Value (EU)

< 840 g/l

## Substrate

With 1K- or 2K Primer or Filler preterated surfaces. The damaged area must be dry and free of grease and dust and all rust needs to be removed.

## Processing

### Protection measures



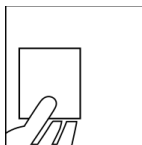
Wear personal protection equipment.  
(respiratory mask/gloves/goggles)  
For more information, see safety data sheet.

### Shake



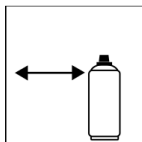
Shake can thoroughly for at least 2 minutes from when the mixing balls are heard.

### Spray to test



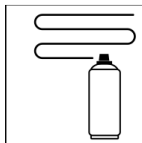
After shaking the can, test spray and check compatibility with the surface and the colour.

### Spraying distance



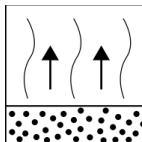
15 cm - 20 cm

### Spray passes



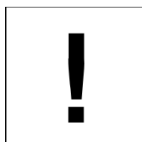
Dry film thickness 60 µm  
(approx. 2 - 3 spray coats)

### Flash-off time



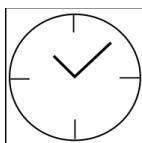
Flash time: approx. 5 min between each spray coat

### Processing conditions



Optimum application at 18° C - 25° C and a relative humidity from 40 - 50 %.

### Drying



TG1 dust dry: 20 min

The stated values refer to the above-mentioned processing conditions. The level of dryness is determined pursuant to DIN 53150.

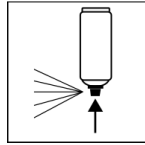
### End flash-off time

End flash time: 20 min

### Continue

Can be topcoated with all conventional 1K and 2K clearcoats.

## Finish



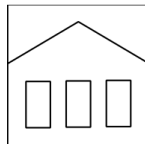
After painting, turn the can upside down and spray the valve until empty.

## Additional Information

### Important Information

The colour and effect can only be finally assessed once they have been coated with a clearcoat.

### Shelf Life



36 months

The usage period refers to an unused can that is stored correctly at a temperature of 15 - 25 °C and a relative humidity below 60%. The can must be stored and transported in an upright position in a dry place where it is protected against chemical and mechanical influences. The safety information on the can and all statutory provisions applicable for the storage site must be observed.

### Disposal



The completely emptied spray cans must be disposed of in the recycling system. Cans with hardened material must be disposed of as special waste.

### Note

For professional use only.

Identification, see safety data sheet.

The contents in this technical data sheet were created with great care and reflect our current state of knowledge. They provide the user with application-specific information and do not promise certain properties. The information is non-binding and we accept no liability for its integrity, accuracy and completeness. They do not relieve the user of their duty to check the suitability of our product for the intended purpose. The warnings printed on our labels must be respected. Our brands and patents are protected by copyright. All rights reserved We reserve the right to update, amend or supplement the content of the information without prior notice.